

PĀPĀMOA DATA SUMMARIES

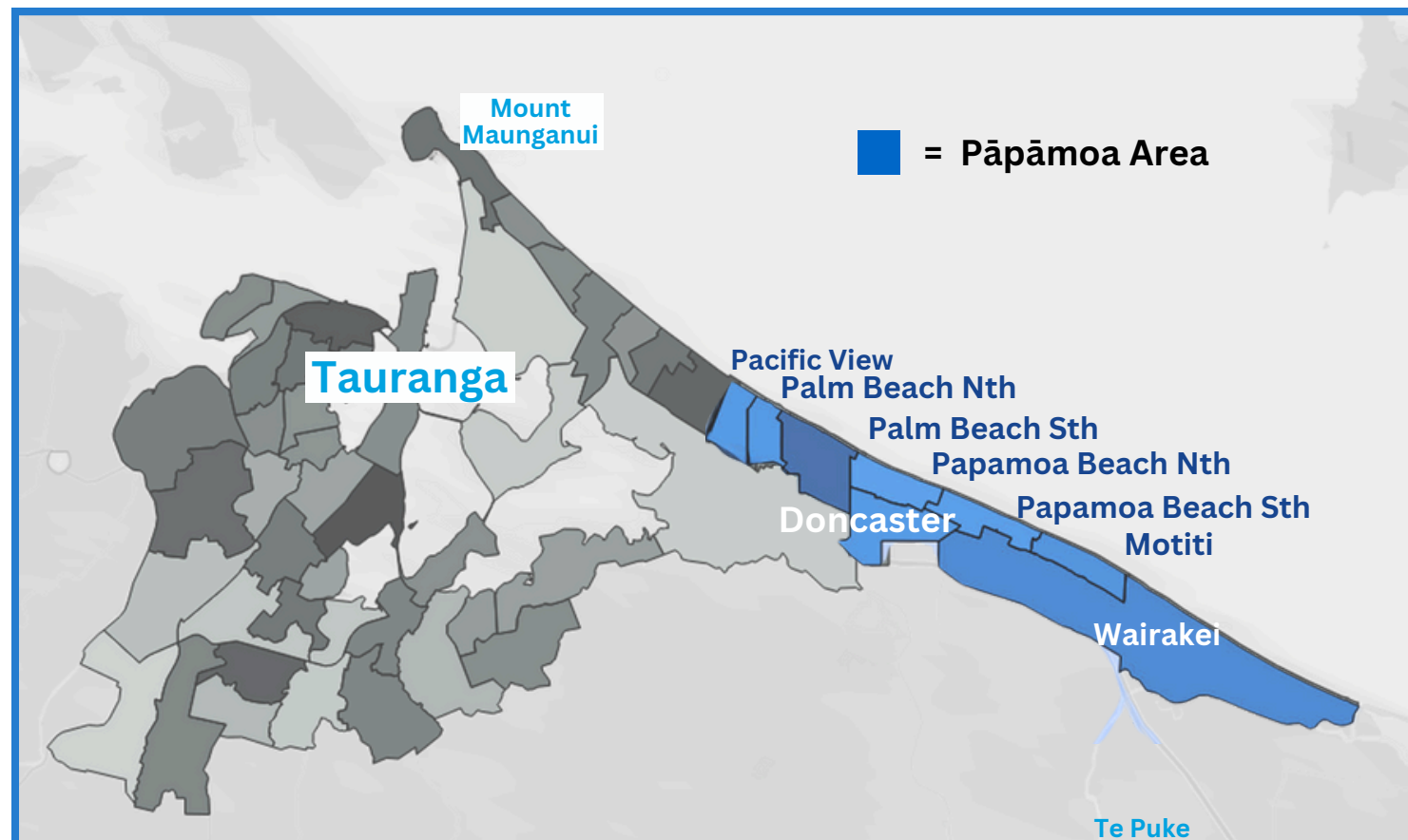
OUR PEOPLE

Stats NZ 2021

Total Pāpāmoa Population¹

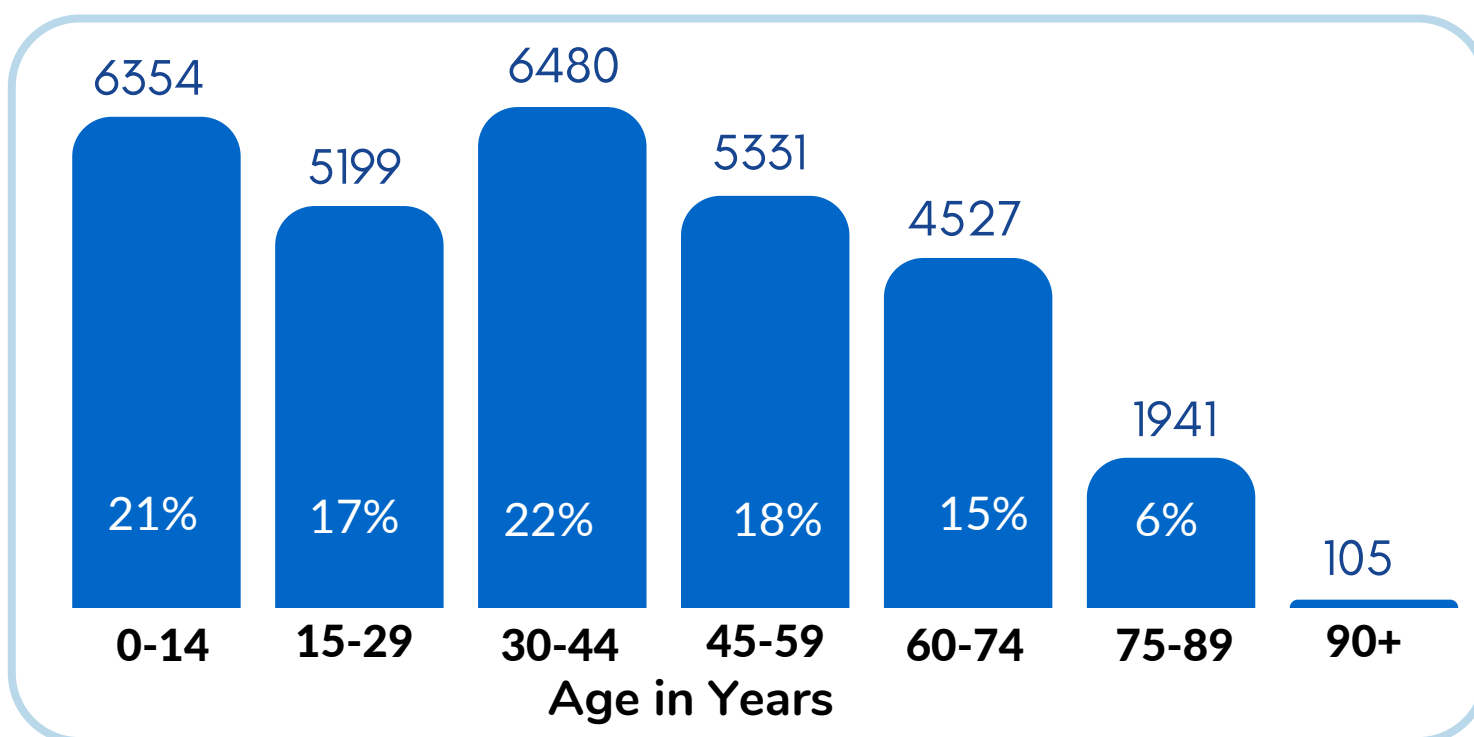
29,937

The Pāpāmoa population increased by **4,665** people (18%) between 2018 & 2021



The rohe of Pāpāmoa includes the area from Tuihana Drive to the State Highway, along the coast to the Kaituna River

Age Distribution¹



1 in 5

Pāpāmoa people are under 15 years of age

Pāpāmoa has a youthful population

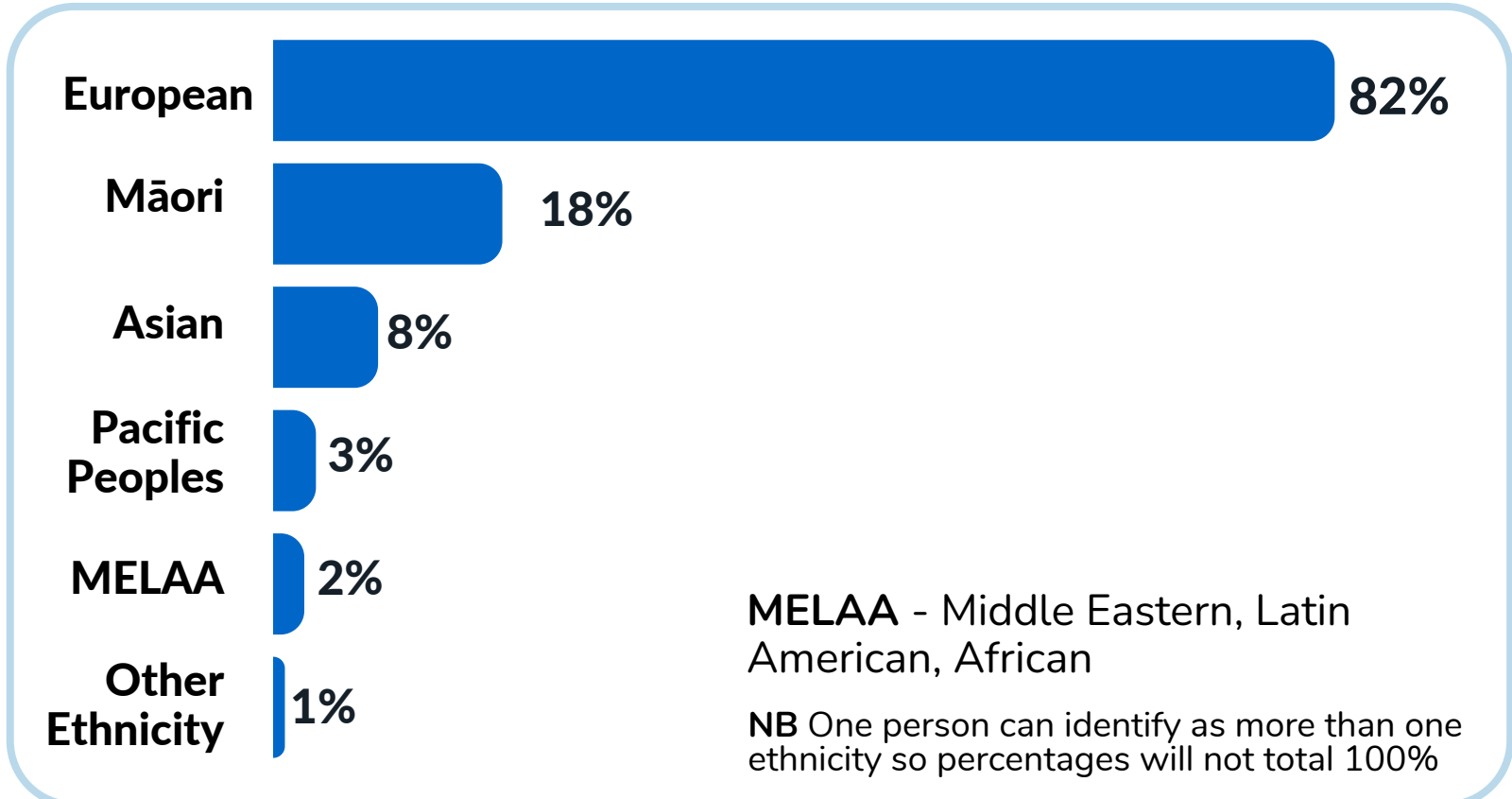
Dec 2021



Ethnic Makeup of Community¹

Dec 2021

With 82% of Pāpāmoa's population identifying their ethnicity as European, the suburb is less ethnically diverse than Tauranga as a whole



Close to 1 in 5 Pāpāmoa residents report Māori ethnicity



2,430 Pāpāmoa residents are of Asian ethnicity with 5% of the population identifying as Indian

March 2022

People with Disabilities³

1,020

Pāpāmoa residents live with a disability (3.4%)

People with high functional limitations across any of 6 categories including communication, hearing, remembering, seeing, walking and selfcare

Languages Spoken²

(in addition to English)

| | |
|------------|------------|
| Māori | Punjabi |
| 729 | 423 |
| 2.9% | 1.7% |

Source Info:

1. Stats NZ Experimental Administrative Population Census Dec 2021
2. Census 2018
3. Social Wellbeing Agency analysis from Stats NZ IDI

All data accessed at: <https://swa.govt.nz/what-we-do/community-insights-explorer/>



Infographics supplied by:
Community Insights

Community Insights is a division of
Socialink Western Bay of Plenty
Building a Thriving Social Sector

PĀPĀMOA DATA SUMMARIES

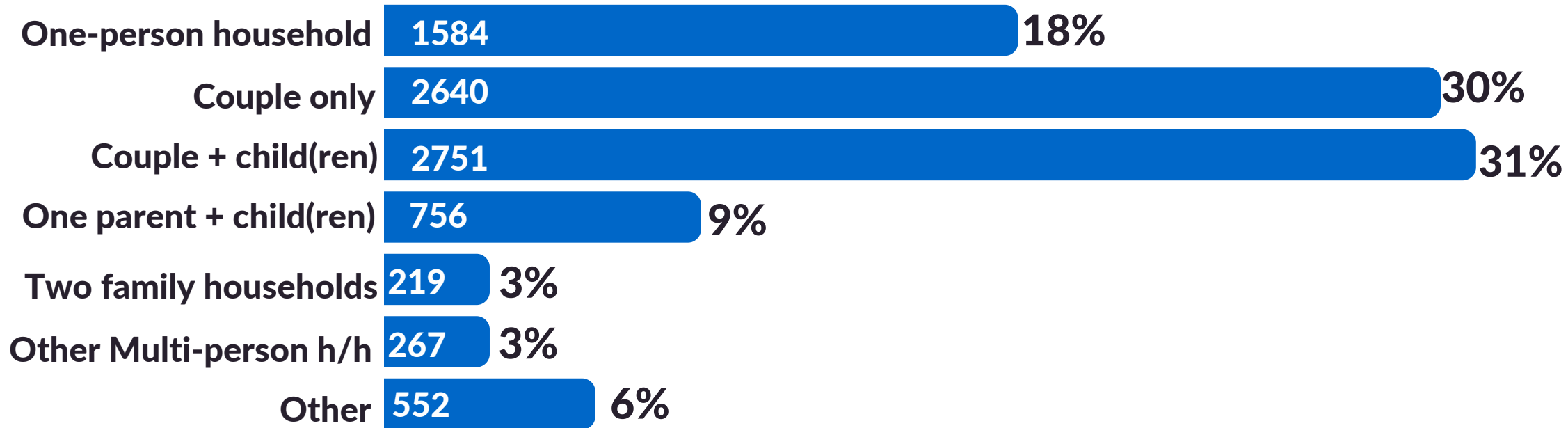
HOUSEHOLDS

Total Pāpāmoa Population¹
29,937 Dec 2021

Total No. of Households²
8,781 Census 2018

Total No. of Dwellings²
10,107 Census 2018

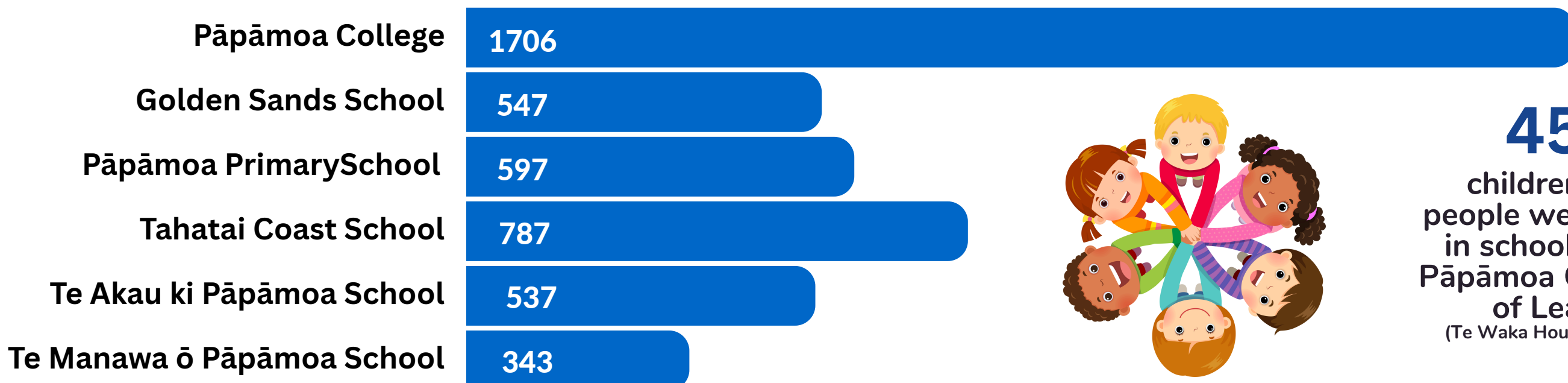
Household Composition³ Census 2018



48% of households in Pāpāmoa are 1 or 2 person households

EDUCATION

Pāpāmoa School Rolls⁴ July 2023

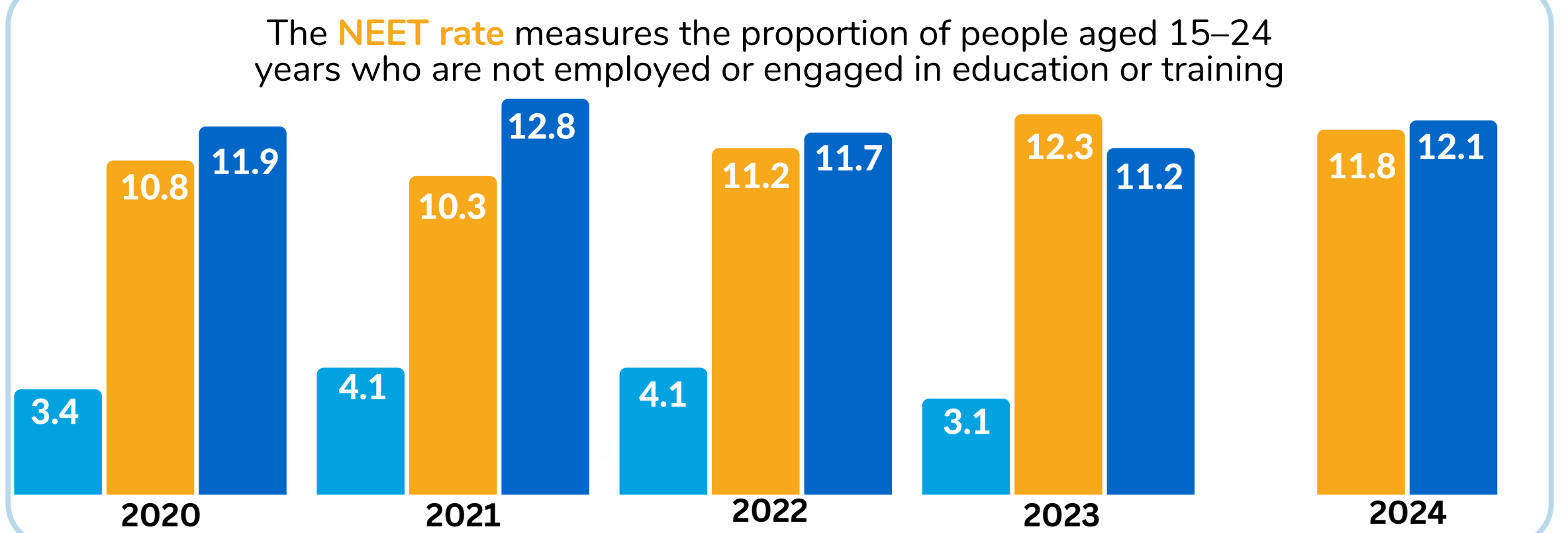


4517 children/young people were enrolled in schools within Pāpāmoa Community of Learning (Te Waka Hourua o Pāpāmoa)

WBOP NEET (Not in Employment or Education & Training) Rate⁵

1 in 8 Tauranga young people are not in employment, education or training

■ TGA UE rate
■ TGA NEET Rate
■ NZ NEET Rate



Source Info:

- Stats NZ Experimental Administrative Population Census Dec 2021
 - Census 2018
 - Housing Composition in [TCC Kainga Tupu | Population & Households Dashboard](#)
 - Education Counts School Rolls Dataset [Viewed on [Community Insights CY Wellbeing Dashboard | Education](#)]
 - Stats NZ Household Labour Force Survey in [Infometrics Report | Tauranga City](#)
- 1-3 accessed at <https://swa.govt.nz/what-we-do/community-insights-explorer/>



Infographics supplied by:
Community Insights

Community Insights is a division of
Socialink Western Bay of Plenty
Building a Thriving Social Sector

PĀPĀMOA DATA SUMMARIES

INCOME & DEPRIVATION

Median Individual Income ¹

\$44,025
PĀPĀMOA

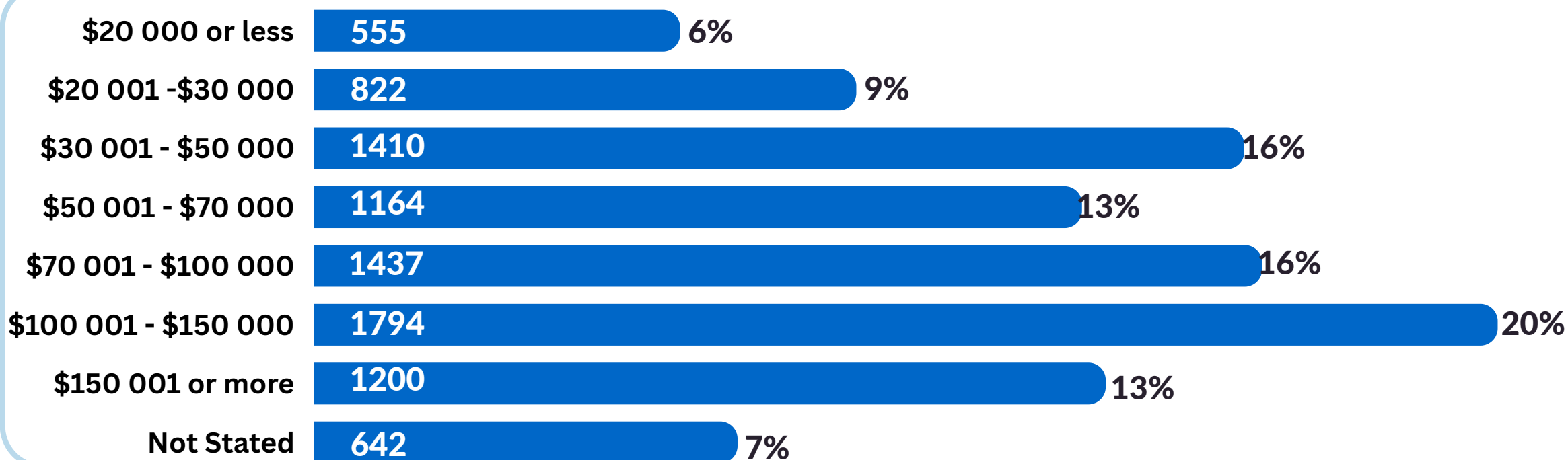
Papamoa's Median income is within \$200 of both the Tauranga and NZ Median Individual Income

Dec 2021

Median before-tax income received for the financial year from all sources for people aged 15 years and over

Household Income ²

Census 2018

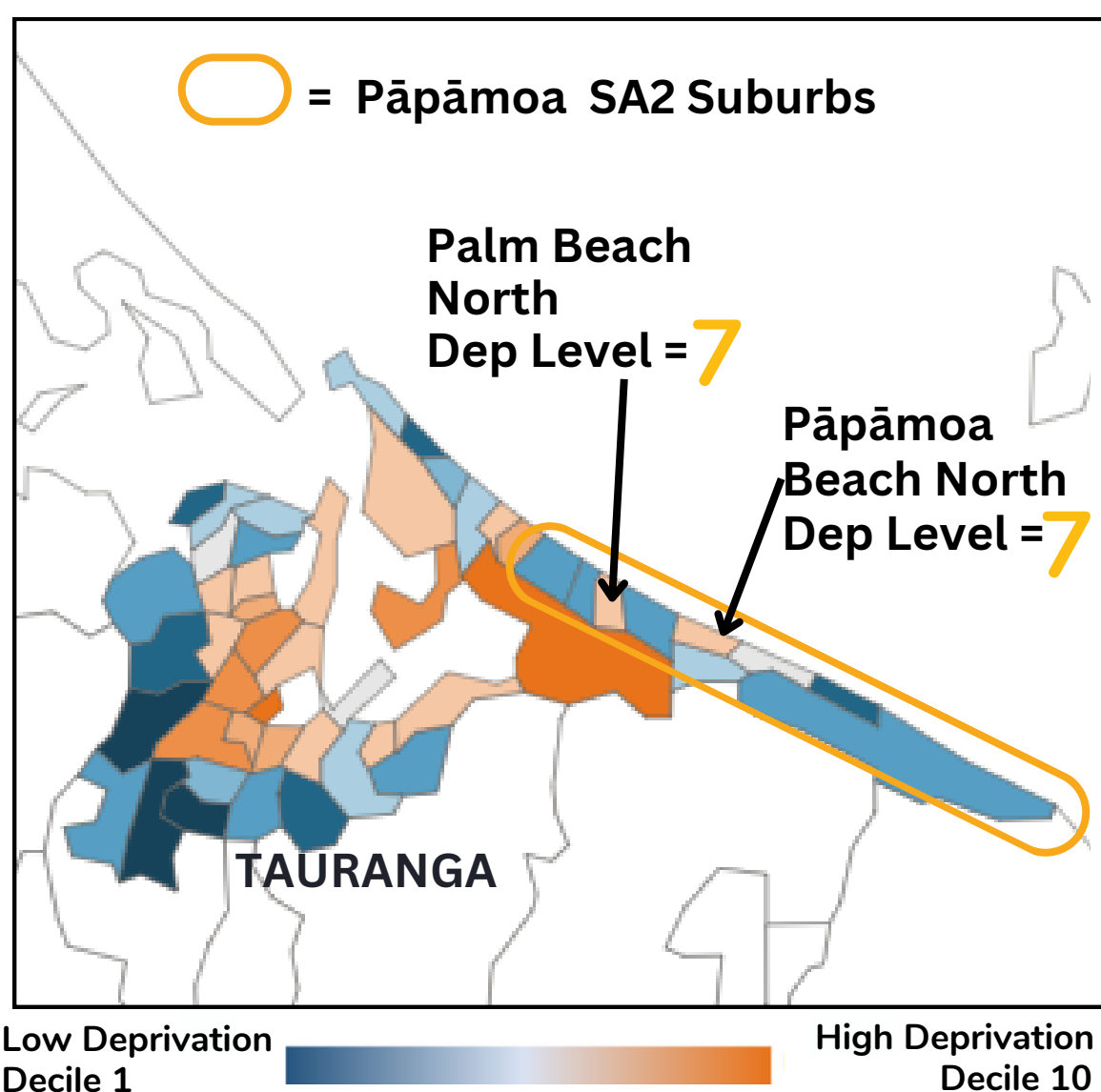


31% of Pāpāmoa households earned less than \$50 000 in 2018



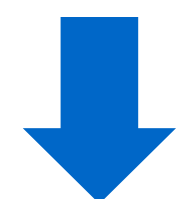
Deprivation Index ³

NZDep is an area-based measure of relative socio-economic deprivation. Small areas' deprivation scores are grouped into deciles.



| Dimension of Deprivation | Description of variable (in order of decreasing weight in the index) |
|--------------------------|---|
| Communication | People who have no access to internet at home |
| Income | People aged 18-64 receiving a means tested benefit |
| Income | People living in equivalised* households with income below an income threshold |
| Employment | People aged 18-64 unemployed |
| Qualifications | People aged 18-64 without any qualifications |
| Owned Home | People not living in own home |
| Support | People aged <65 living in a single-parent family |
| Living Space | People living in equivalised* households below a bedroom occupancy threshold |
| Living Condition | People living in dwellings that are always damp &/or always have mould greater than A4 size |

Individual suburbs range from low deprivation 2 (Motiti) to high deprivation 7 (Palm Beach North, Pāpāmoa Beach North)



Pāpāmoa encompasses a diverse mix of small communities, with some pockets of relatively high deprivation as well as more affluent neighbourhoods

Whakahou Taketake Vital Updates (TCC Resident Survey) 2023 ⁴

6309
TOTAL Respondents

892
Pāpāmoa Respondents

Vital Updates is a survey of Tauranga Residents carried out every 3 years. It asks about residents aspiration and vision for the city. It also asks about wellbeing factors

7.3%
Of Pāpāmoa respondents had lived in Tauranga less than 2 years

18%
were Struggling with the Cost of Living
13% had Not enough or Nowhere near enough 5%

16%
Do not have savings

17%
Reported experiencing Mental Health Issues

Source Info:

1. Stats NZ Experimental Administrative Population Census Dec 2021
2. Household Income in TCC Kainga Tupu | Population & Households Dashboard
3. University of Otago DepIndex based on Census 2018 data
4. TCC Vital Updates 2023

1-2 accessed at <https://swa.govt.nz/what-we-do/community-insights-explorer/>



Infographics supplied by:
Community Insights

Community Insights is a division of
Socialink Western Bay of Plenty
Building a Thriving Social Sector